



HYDRAULIC FILLING MACHINE DF 40 X

Compact and powerful filler for large volumes

On account of its compact, robust, and highly efficient method of construction, the hydraulic filling machine DF 40 X is an ideal device for medium sized butcher's shops.

The 40 litre cylinder allows filling large volumes into big calibers, which is especially useful for processing large amounts of the same sort of sausage meat. The filling speed can be regulated by a steering valve located in a user friendly position on the front of the machine. The machine also allows the setting of the piston retreat.

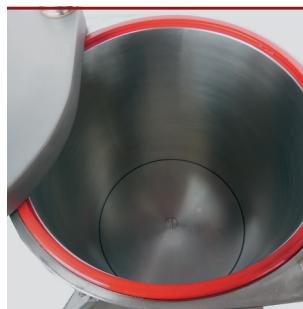


Even so the DF 40 X is a mobile machine, its high dead-weight guarantees a good stability. Both the removable knee pedal and filling piston ensure a simple cleaning.

The high method of construction offers a perfect level to work on the machine and it allows the user to stand conveniently while working. The ergonomic knee lever is extremely easy to operate. Mounting the attached filling pipes by bolting with stainless-steel screws turns out to be very basic.

The closed oil system and its stainless-steel oil tank prevent detergent and condensation water from interrupting the oil circulation. This way, maintenance is needed to a low degree and the service life of both the hydraulic pump and the valves is increased. Since the piston rod is made of stainless-steel, a high service life of the hydraulic cylinders is guaranteed as well.

DETAILS



Machine Type

- completely stainless-steel
- stainless-steel cylinders
- pistons simply removable
- infinitely variable filling speed
- removable knee lever
- mobile edition
- protective caps for push buttons
- 3 stainless-steel filling pipes

Drive

- maintenance-free electric engine with hydraulic pump
- 1,5 kW, 400 V, 50 Hz

Hydraulics

- closed hydraulic system
- stainless-steel oil tank separately integrated in cabinet
- high hydraulic pump pressure

Specifications

	DF 150 E	DF 250 X	DF 25 C	DF 40 X
Cylinder volume (litres)	15	25	25	40
Pump pressure (bar)	120	130	150	150
Power (kW)	0,37	0,74	1,5	1,5
Voltage	400	400	400	400
Control Voltage	24	24	24	24
Safety Fuse (A)	16 (träge)	16 (träge)	16 (träge)	16 (träge)
Dimensions (mm)				
Width	381	520	363	515
Depth	441	430	499	532
Height	1003	1170	1155	1115
Weight (kg)	100	130	130	210
Accessories	Tool to dismantle pistons 3 filling pipes (14, 20, 30 mm)	Tool to dismantle pistons 3 filling pipes (14, 20, 30 mm)	Tool to dismantle pistons 3 filling pipes (14, 20, 30 mm)	Tool to dismantle pistons 3 filling pipes (14, 20, 30 mm)